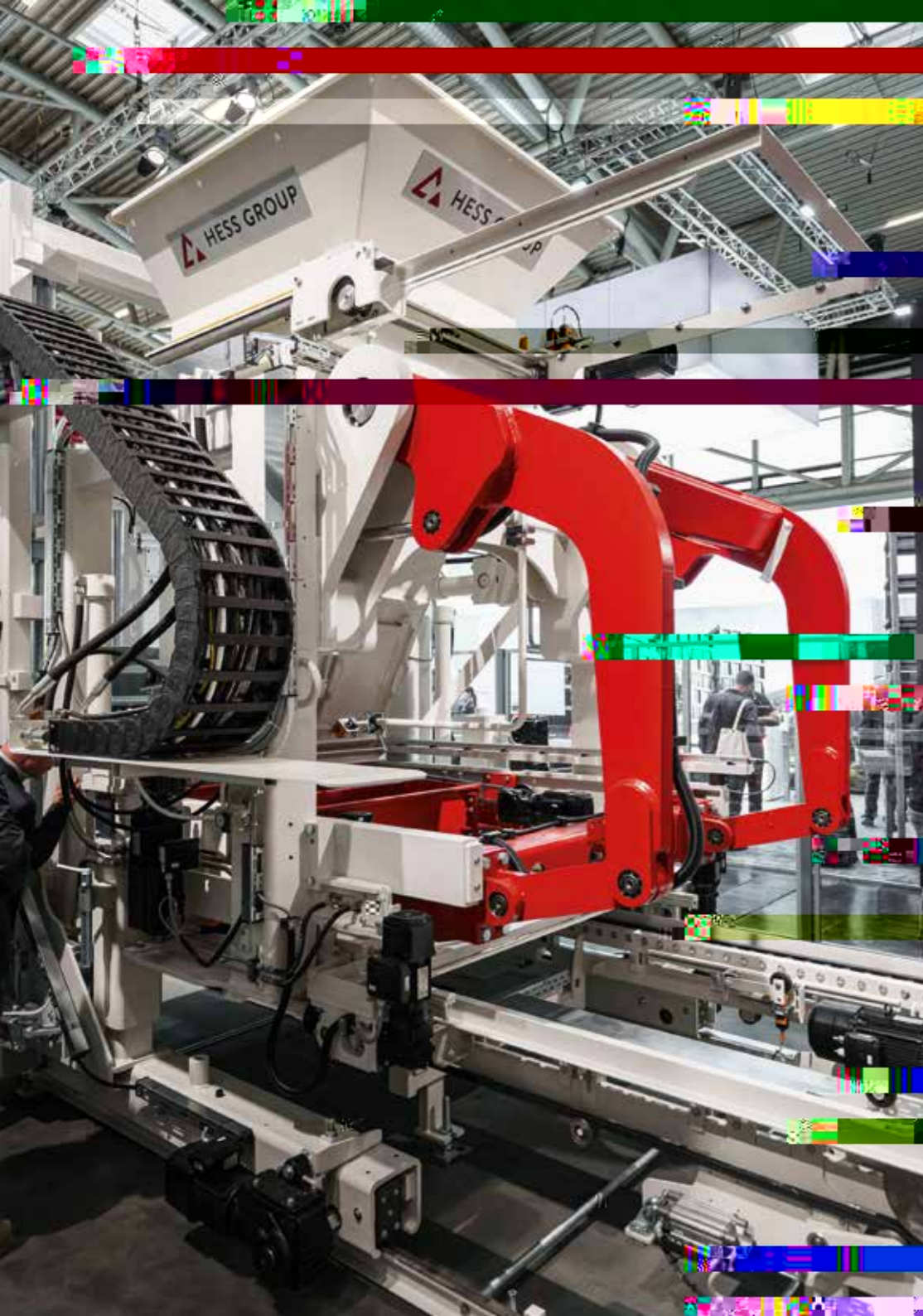


HESS GROUP



OUR COMPANY

WHO IS HESS GROUP?

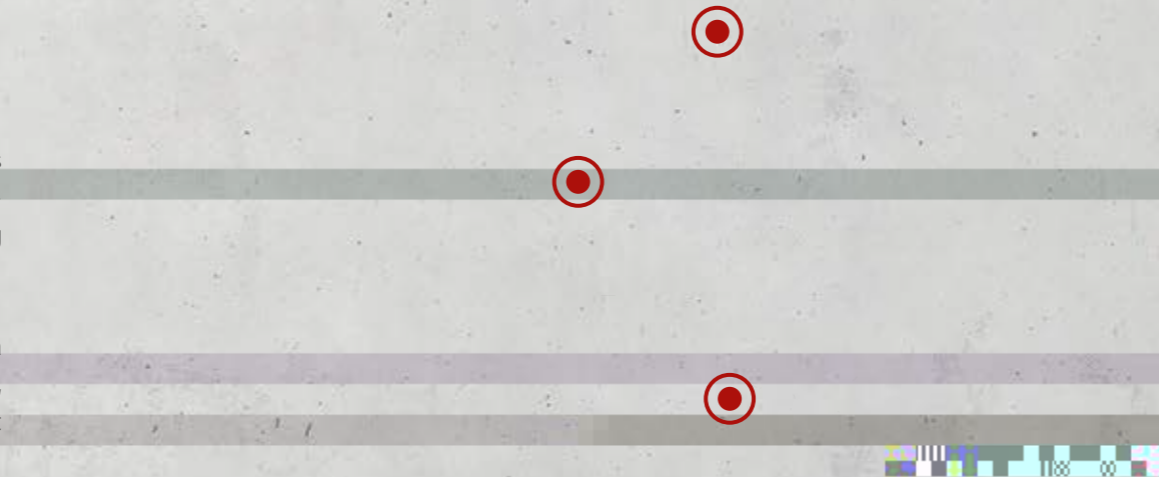
MIXERS, HANDLING SYSTEMS,
CONCRETE BLOCK AND PAVER
MACHINES, AND PACKAGING LINES

Our passion is developing technically superior machines for the production, processing, and handling of high-quality concrete products — and we have been doing so since 1948.

As a driver of new sustainable innovations and with a distinctive team spirit in an international environment, we continuously expand HESS GROUP's leading market position.

HESS GROUP WORLDWIDE

As part of the TOPWERK GROUP, HESS GROUP is represented worldwide. With eight international TOPWERK locations and a global network of representatives, HESS GROUP offers optimal service to its customers.



OUR VISION

It is our endeavor to discover and create new market needs in close collaboration with our customers. For this, we develop solutions that make us and our customers innovative pioneers in the concrete block and paver industry.

Each of our products is developed specifically according to our customers' needs. Our concrete block and paver plants are characterized by their durability and reliability and can be upgraded with the latest technology even after years.

Open and honest communication is essential to us. We work together and develop solutions and results as a team and across departmental boundaries.

OUR MISSION

We enable our customers – in collaboration with us – to produce the best concrete blocks and pavers efficiently. The following four factors are paramount:

Our customers are at the center of our actions. We are a reliable and honest partner who, together with them, shapes the digital future of our industry.

Each of us has high standards for our personal work results. Taking responsibility for one's own actions and seeing mistakes as opportunities for improvement is part of our culture.

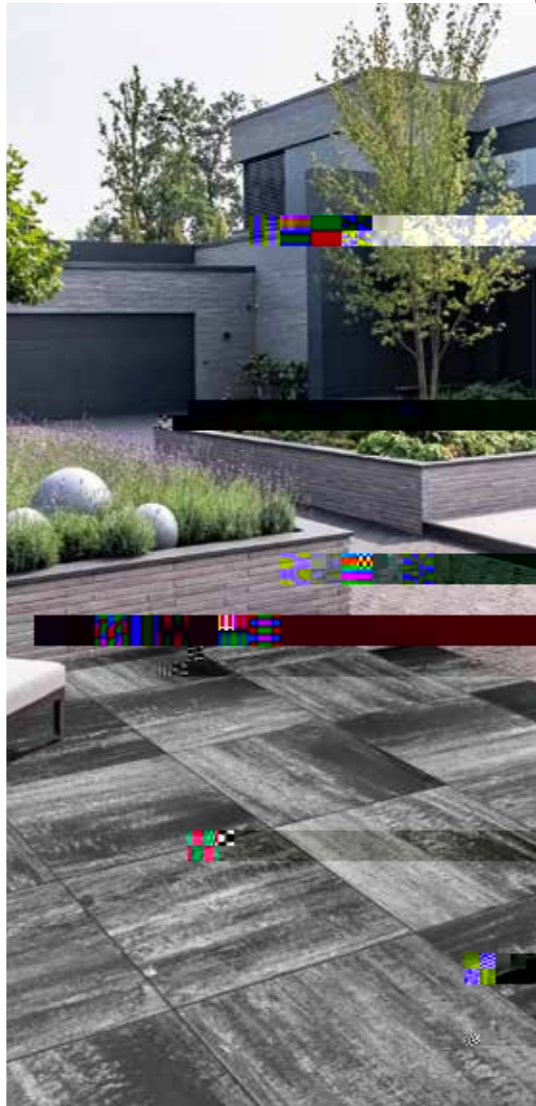
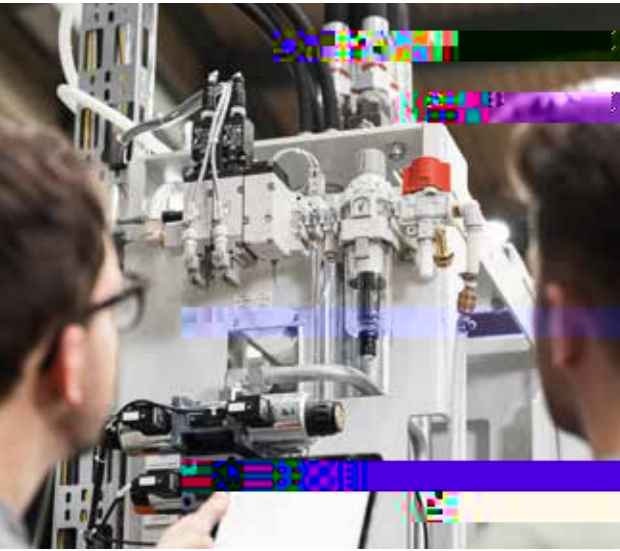
OUR VALUES

For us, quality means combining durability and reliability with the latest technology.

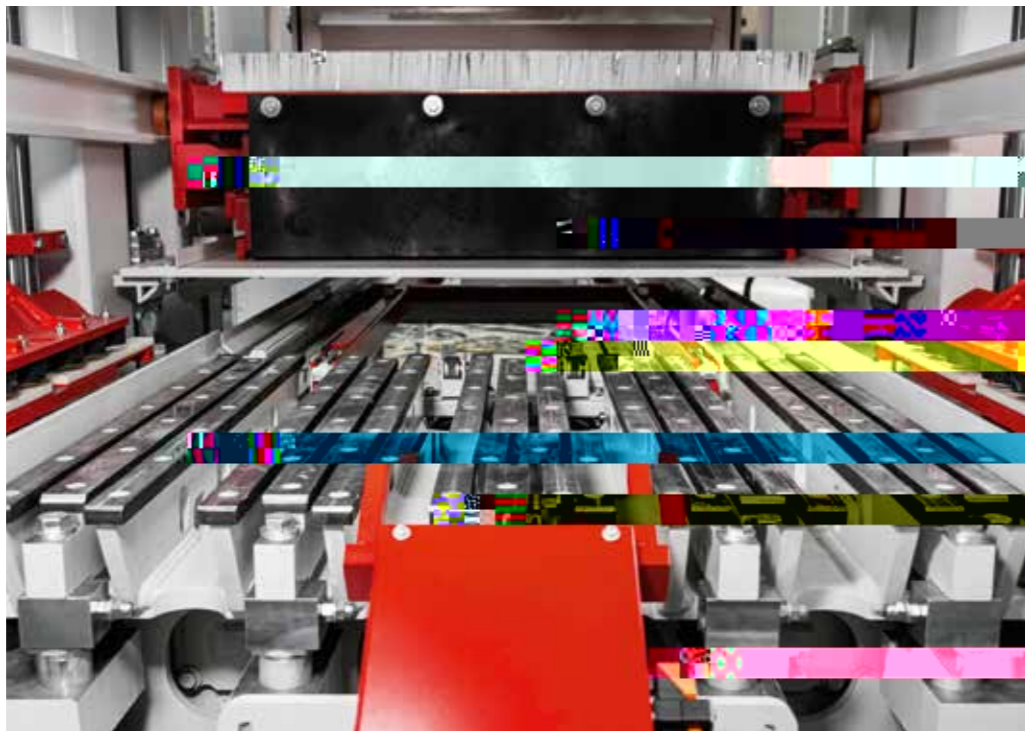
Innovation involves transforming the market through technology. By continuously enhancing automation, swiftly responding to market needs, and broadening refinement options, we ensure the long-term viability of our products.

In partnership with our customers, we fulfill individual requirements. We support them operationally as a knowledgeable and trustworthy partner.



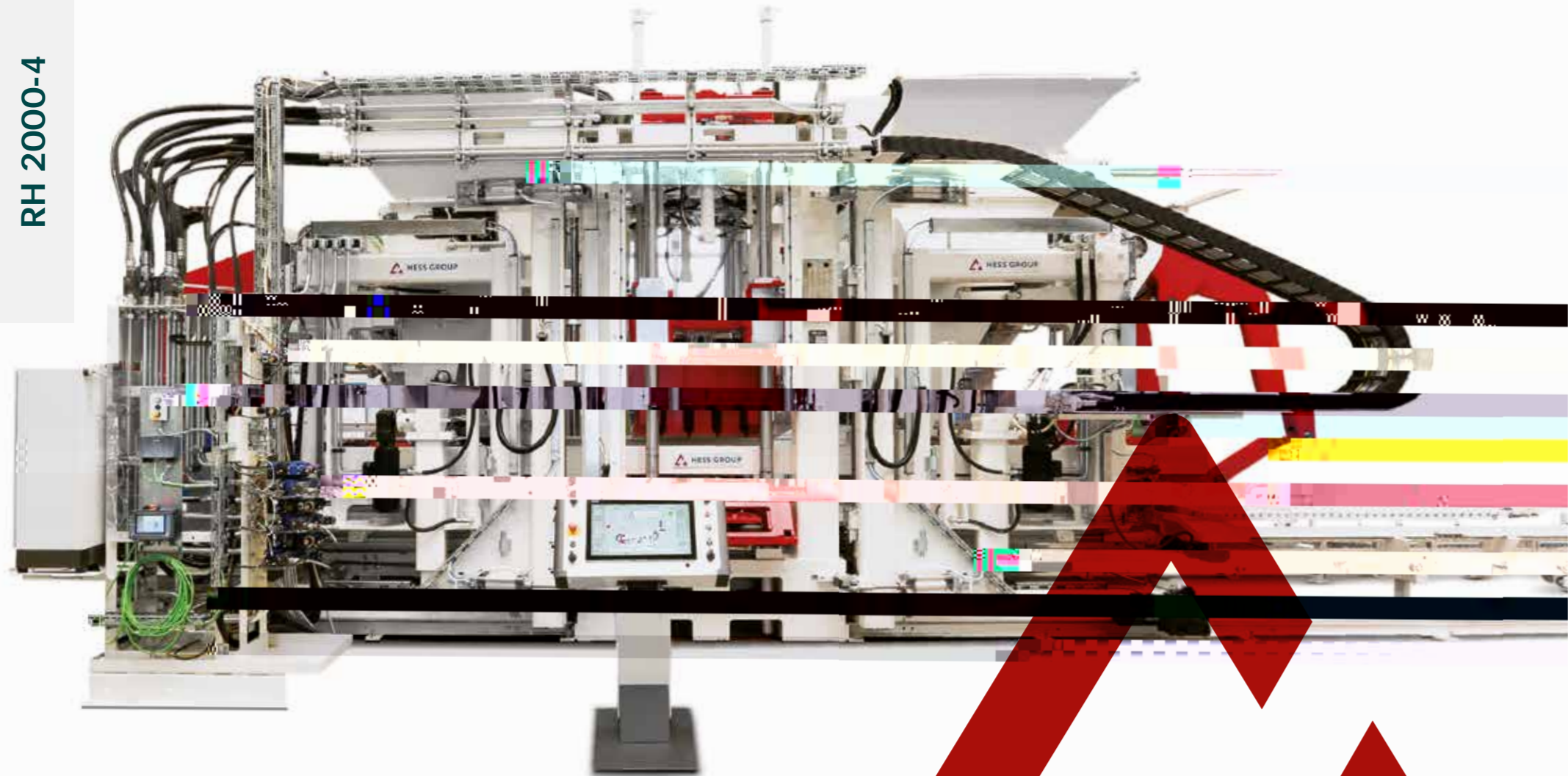


**WE PUT
CONCRETE
INTO SHAPE.**



RH 2000-4

RH 2000-4



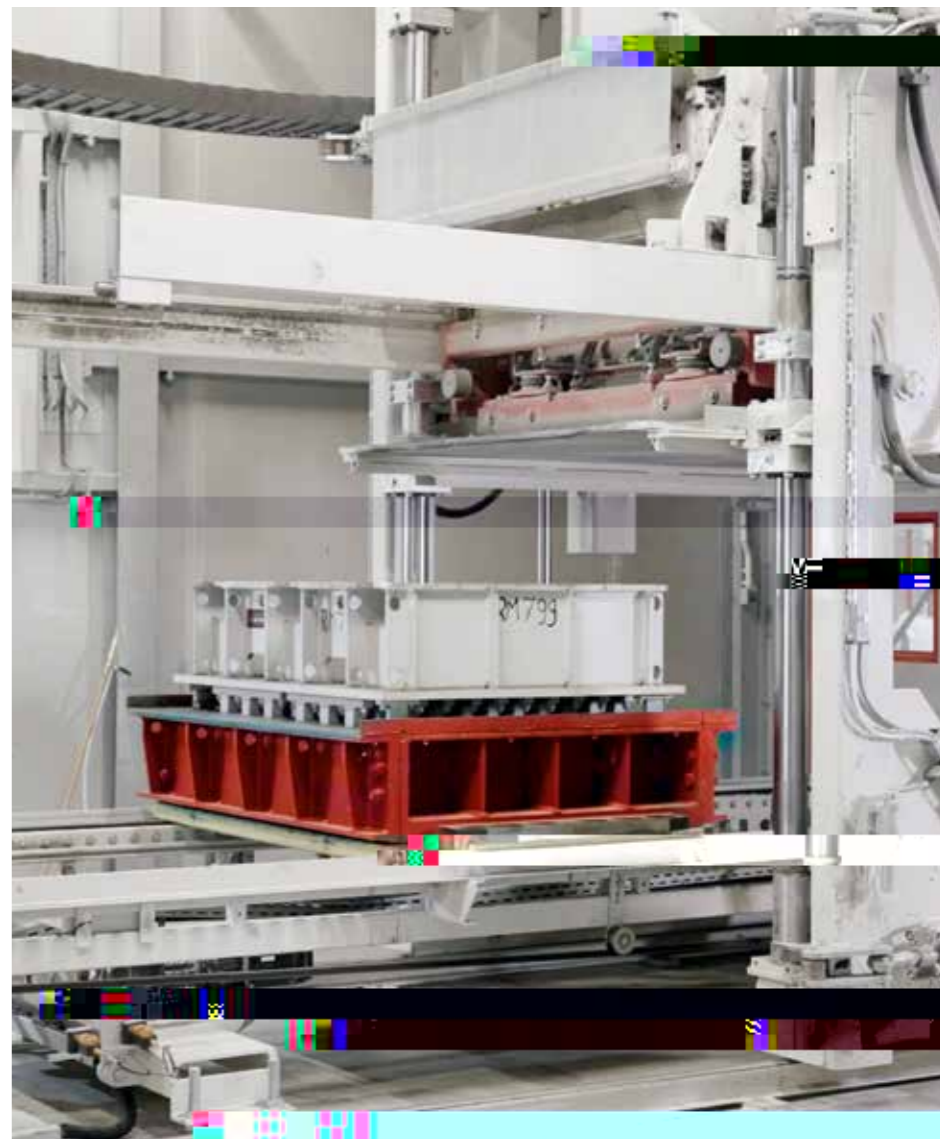
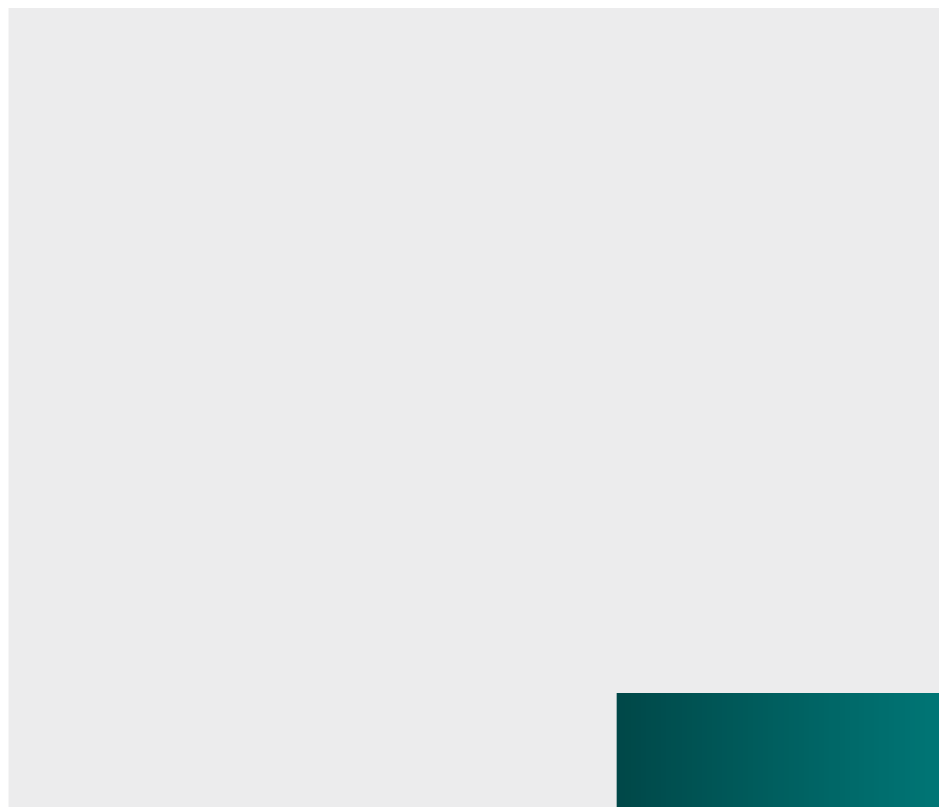
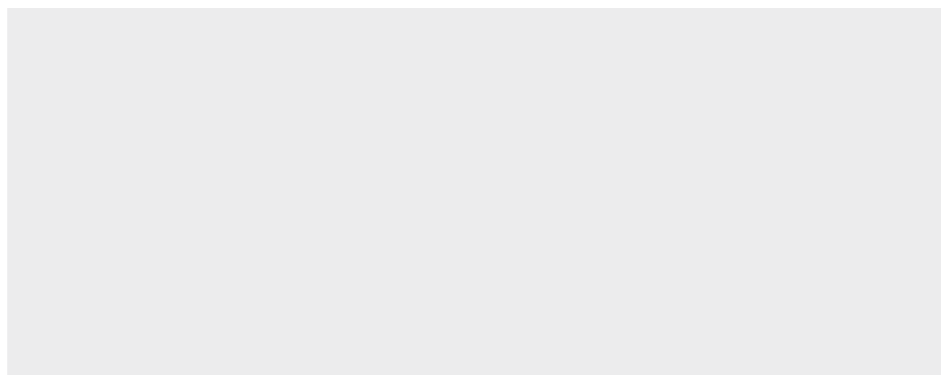
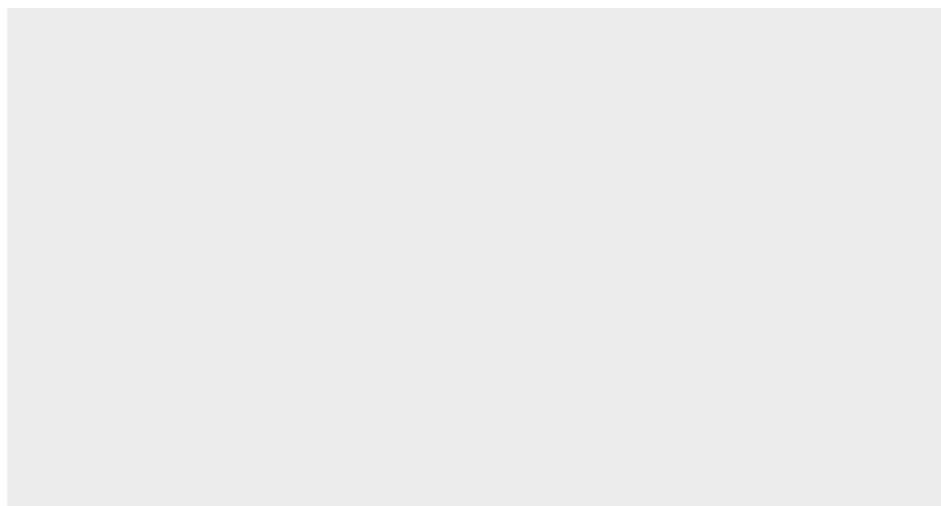
HESS RH 2000-4

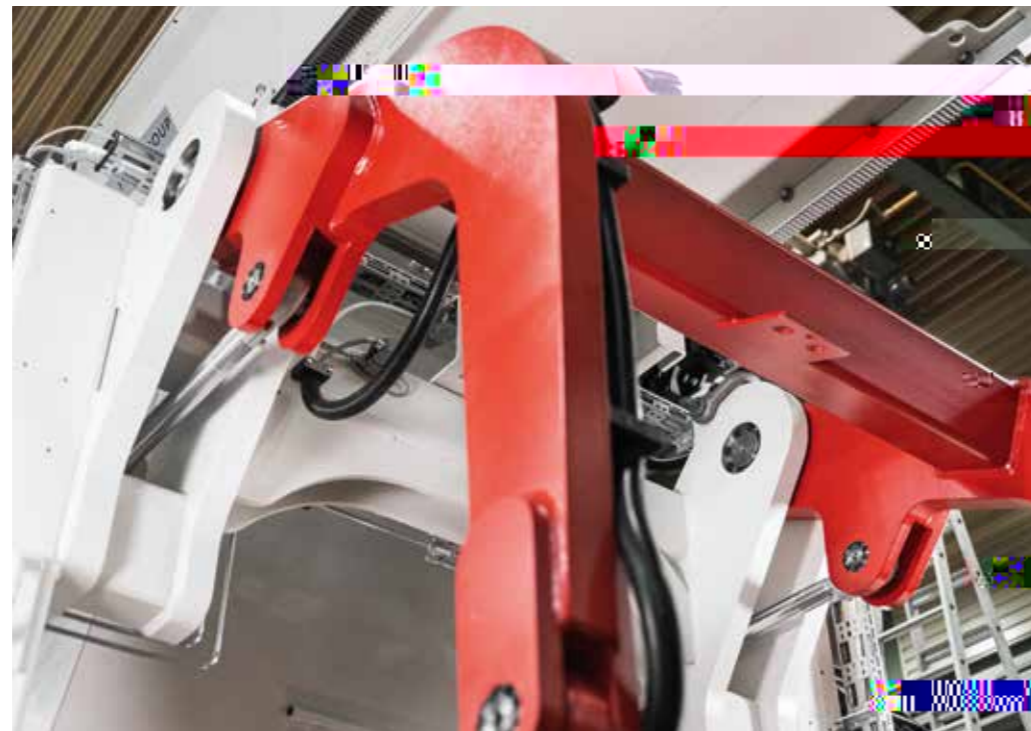
THE LEADER AMONG CONCRETE BLOCK AND PAVER MACHINES

The RH 2000 is HESS's high-end machine, combining the latest technology with decades of machine-building experience. It offers an easy operation, maximum efficiency, and meets the highest safety standards. Continuously developed since the 1990s, the RH 2000 is now available in its fourth generation: the RH 2000-4.

		RH 2000-4 MVA Production area	RH 2000-4 MVA Production Area
*			
Production board size [mm]**		1,400 x 1,100	1,400 x 1,300
Production area [mm]**		1,300 x 1,050	1,300 x 1,250
Min. product height [mm]		25	25
Max. product height [mm]		500	500
Dead weight in MVA Version [kg]		46,000	48,000
Paving stone 10 x 20 x 5 cm without face mix	Cycle time [s]	10	10
	m ² in 8h	2,644	3,230
	Quantity of products/mold	54	66
Paving stone 10 x 20 x 6 cm with face mix	Cycle time [s]	11.5	11.5
	m ² in 8h	2,299	2,809
	Quantity of products/mold	54	66
Hollow block 20 x 40 x 20 cm	Cycle time [s]	13.5	13.5
	Quantity in 8h	21,760	32,640
	Quantity of products/mold	12	18

* Production output is calculated based on 85 percent machine availability and is significantly influenced by machine settings, the concrete mixing recipe used, the quality of raw materials, the performance of other related plant equipment, mold characteristics, the stone format, and the production pallets used. Technical Data are subject to change.
** Other production board sizes available.

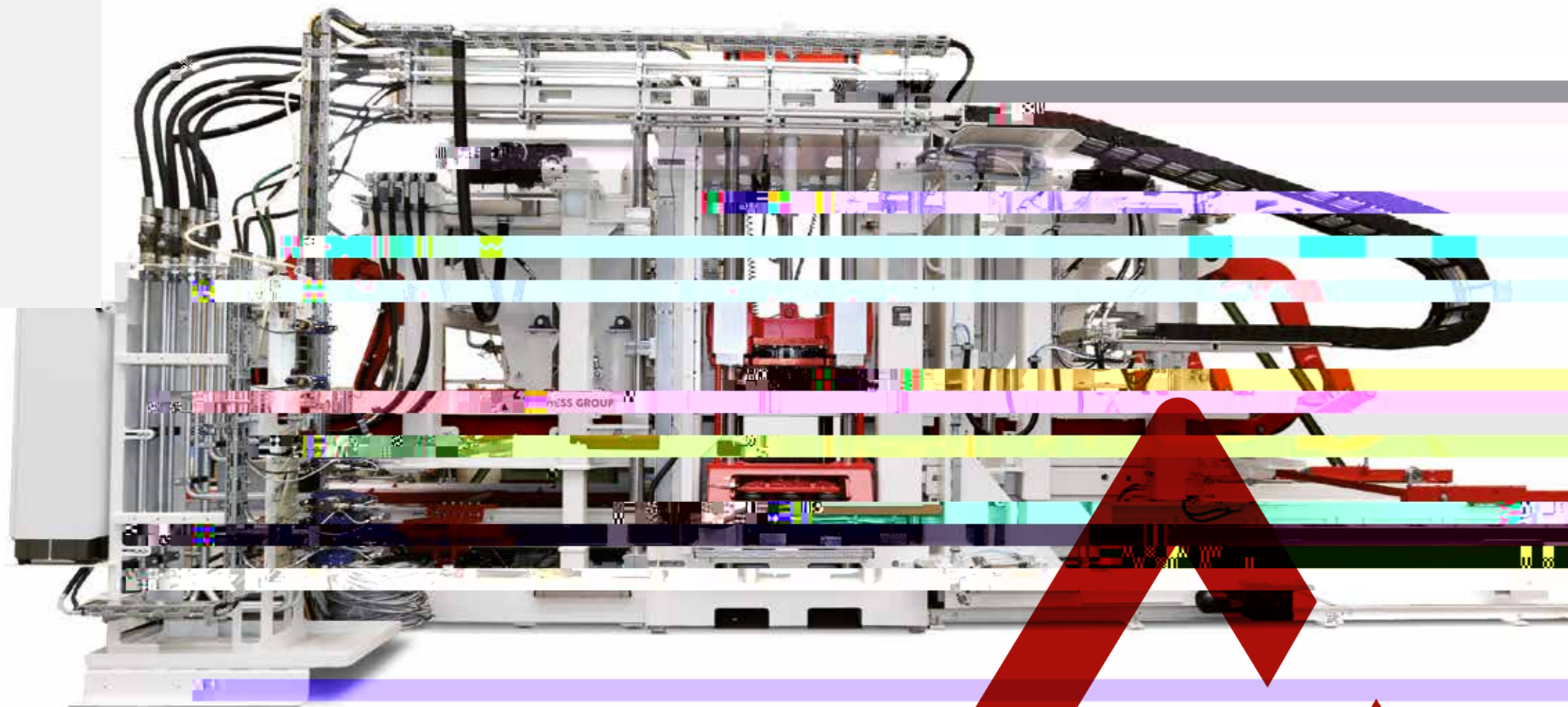




**WE PUT
CONCRETE
INTO SHAPE.**

RH 1500-4





Production board size [mm]**		1,400 x 1,100
Production area [mm]**		1,300 x 1,050
Min. product height [mm]		25
Max. product height [mm]		500
Dead weight in MVA Version [kg]		46,000
Paving stone 10 x 20 x 5 cm without face mix	Cycle time [s]	10.5
	m ² in 8h	2,517
	Quantity of products/mold	54
Paving stone 10 x 20 x 6 cm with face mix	Cycle time [s]	12.5
	m ² in 8 h	2,114
	Quantity of products/mold	54
Hollow block 20 x 4mHollow block		

Min. production board depth [mm]	870
Max. production board depth [mm]	1150
Min. production board width [mm]	1200
Max. production board width [mm]	1520
Min. production height [mm]	25
Max. production height [mm]	500
Table vibration Variofrequency, 1 table	<input type="radio"/>
Table vibration VARIO TRONIC, 1 table	<input checked="" type="radio"/>
WIDIA wear ledges for vibration table	<input type="radio"/>
Standard hydraulic, Bosch-Rexroth	<input checked="" type="radio"/>
Servo hydraulic M version with 2 tamper head cylinders	<input type="radio"/>
Leakage detection with M version	<input type="radio"/>
Hydraulic mold flaps	<input type="radio"/>

Mold in base position detection	<input type="radio"/>
Mold change cart, manual	<input type="radio"/>
Mold change cart, electric (from face mix side)	<input checked="" type="radio"/>
Swivel crane for mold change	<input type="radio"/>
Automatic fast mold change cart (from base mix side)	<input type="radio"/>
Drive unit for base mix unit	<input type="radio"/>
Base mix hopper two outlet flaps	<input type="radio"/>
Lining for base mix hopper, PA/ Hardox	<input type="radio"/>
Pneumatic tapper base mix hopper	<input type="radio"/>
Colormix device with draw plate, base mix	<input type="radio"/>
Pneumatic scraper coarse mix filler box	<input type="radio"/>
Table plate lining coarse mix (build-up welding material)	<input type="radio"/>
Horizontal adjustment of base mix table plate, electric	<input type="radio"/>
Face mix unit	<input type="radio"/>
Silo flap with adjustable filling plates	<input type="radio"/>
Face mix unit	<input type="radio"/>
Lining for face mix hopper, PA/ Hardox	<input type="radio"/>
Pneumatic tapper face mix hopper	<input type="radio"/>
Colormix device with draw plate, face mix	<input type="radio"/>
Planing roller, including scrapers at base and face fillerboxes	<input type="radio"/>
Rotating brush on face mix fillerbox (tamper head cleaning)	<input type="radio"/>
Pneumatic scraper face mix filler box	<input type="radio"/>
Table plate lining face mix (build-up welding material)	<input type="radio"/>
Horizontal adjustment of face mix table plate, electric	<input type="radio"/>
Fast lifting cylinders face mix for automatic mold change	<input type="radio"/>
Face mix silo flap with adjustable filling plates	<input type="radio"/>
Polysterene insert device	<input type="radio"/>
Central grease lubrication system	<input type="radio"/>
Oil cooling tower	<input type="radio"/>
Hydraulic draw plate device	<input type="radio"/>
Hydraulic corepuller, base mix side	<input type="radio"/>
Mobile panel machine	<input type="radio"/>

Standard equipment ● Selectable as an option ○

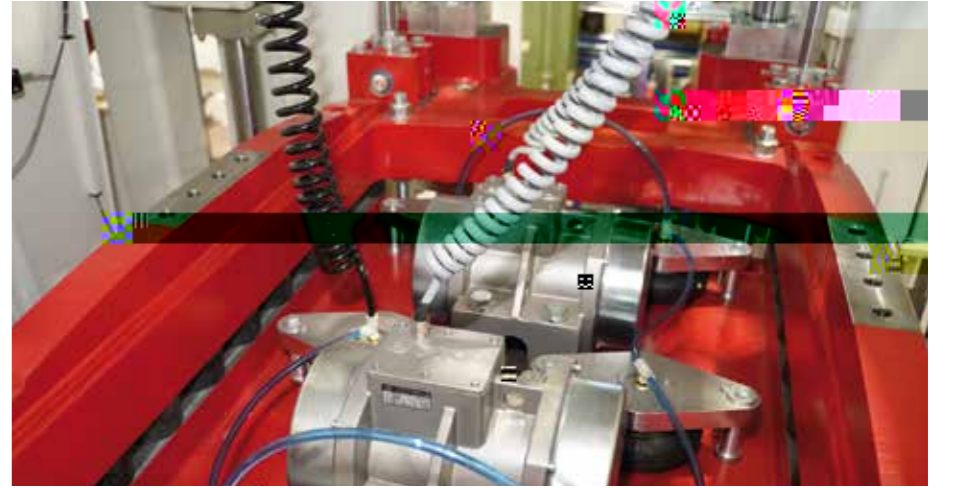
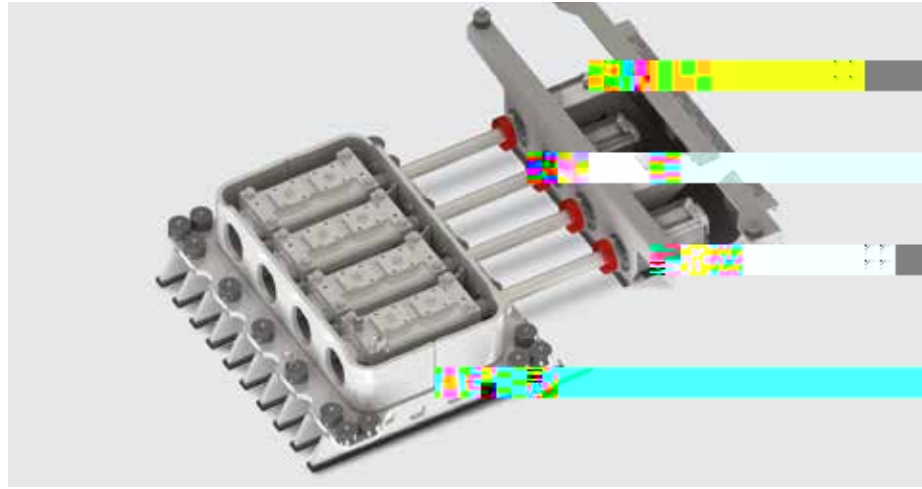
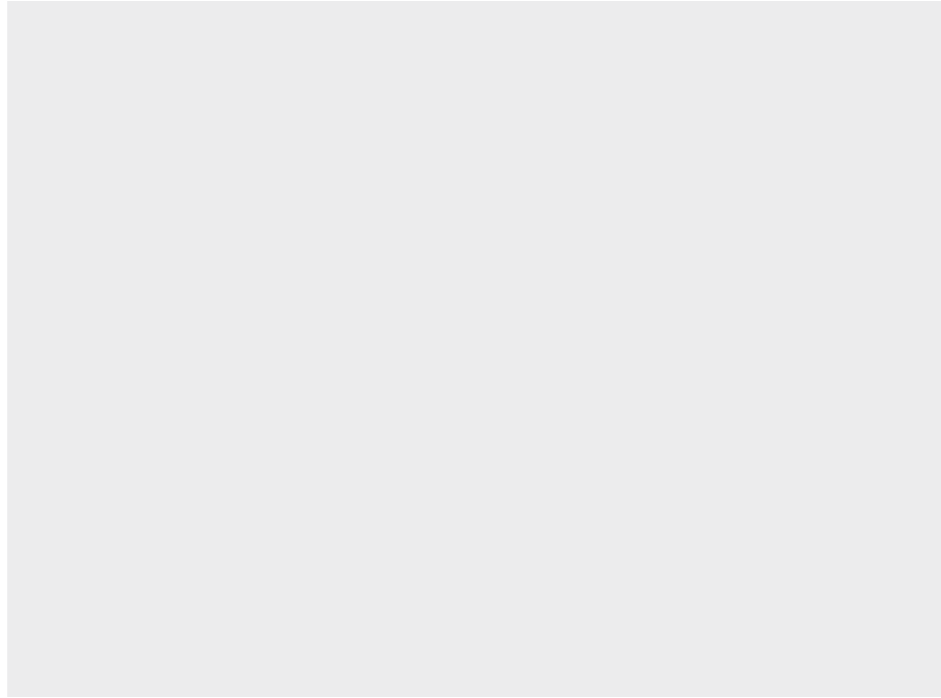
HESS

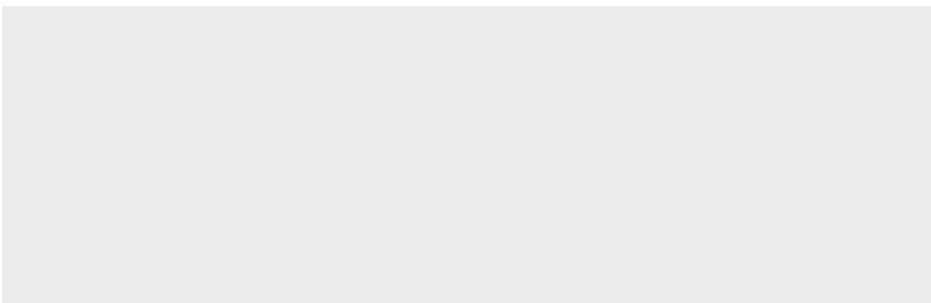
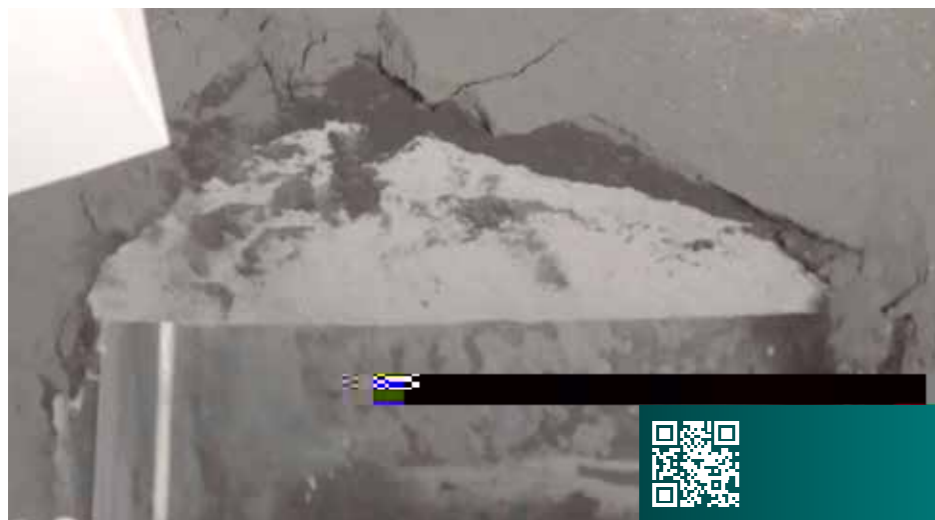
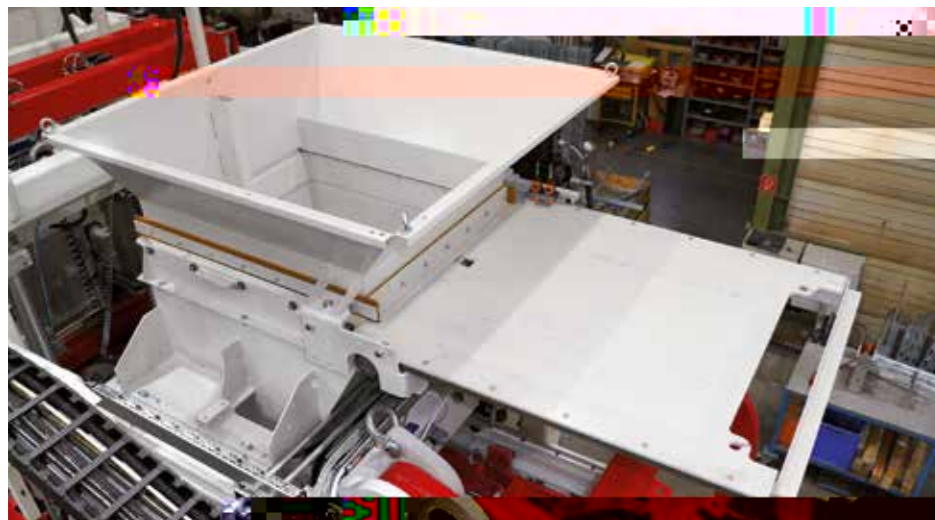
PERFECTED PRODUCTION OF FINE CONCRETE SURFACES

- Patented production system to ensure a homogeneous layer thickness of the face concrete over the entire production area
- The scraper frame in the front area of the filler box is replaced by a hard-chromed smoothing roller
- Both filler boxes (base and face concrete) are equipped with pneumatic scrapers in the front area

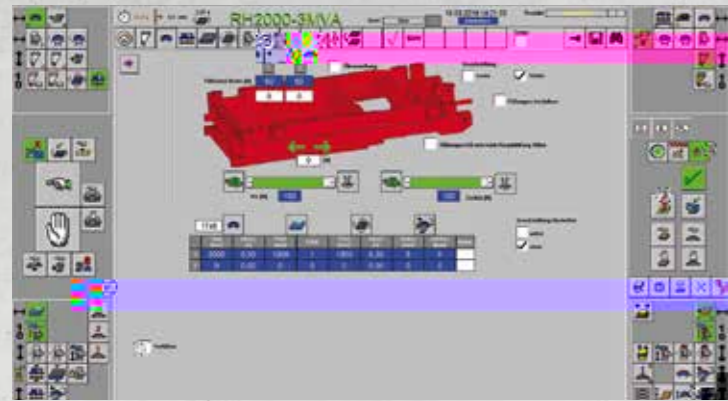
ADVANTAGES

- ▶ Avoids „digging“ concrete out of the mold during the reverse movement of the feeder. The layer thickness of the face concrete is uniform across the entire product.
- ▶ Especially suitable for large concrete slabs.
- ▶ Improved cycle time by eliminating reversing during face concrete filling.
- ▶ Significantly closed product surface.
- ▶ Better bond between core and face concrete.
- ▶ A higher moisture content in the face concrete can be achieved, resulting in improved color intensity of the product.
- ▶ For Colormix products, a more natural-looking surface appearance of the color gradient is achieved (no striping).





Production board size [mm]**		1,200 x 670	1,400 x 700	1,400 x 1,100	1,400 x 1,100	1,400 x 1,100	1,400 x 1,300
Production area [mm]**		1,100 x 620	–	1,300 x 1,050	1,300 x 1,050	1,300 x 1,050	1,300 x 1,250
Min. product height [mm]		25	25	40	25	25	25
Max. product height [mm]		300	300	500	500	500	500
Dead weight in MVA Version [kg]		7,700	14,000	38,000	46,000	46,000	48,000
Paving stone 10 x 20 x 5 cm without face mix	Cycle time [s]	17	14	12.5	10.5	10	10
	m ² in 8 h	863	1,258	2,114	2,517	2,644	3,230
	Quantity of products/mold	30	36	54	54	54	66
Paving stone 10 x 20 x 6 cm with face mix	Cycle time [s]	22	18	14.5	12.5	11.5	11.5
	m ² in 8 h	667	979	1,823	2,114	2,299	2,809
	Quantity of products/mold	30	36	54	54	54	66
Hollow block 20 x 40 x 20 cm	Cycle time [s]	20	16	16.5	14.5	13.5	13.5
	Quantity in 8 h	6,120	13,770	17,800	20,258	21,760	32,640
	Quantity of products/mold	5	9	12	12	12	18



HESS CONTROL

PILOTING ALL MACHINE FUNCTIONS

Concrete block and paver machines and plants are equipped with a control panel that can be adjusted in height and screen angle. With the clear touch panel, you have full control over all machine functions of the linked system.

The intuitive user interface with icons simplifies operation. Complicated inputs are eliminated as the intelligent software automatically adjusts many parameters. Settings can be made quickly with a few operations and sliders – user-friendly and self-explanatory.

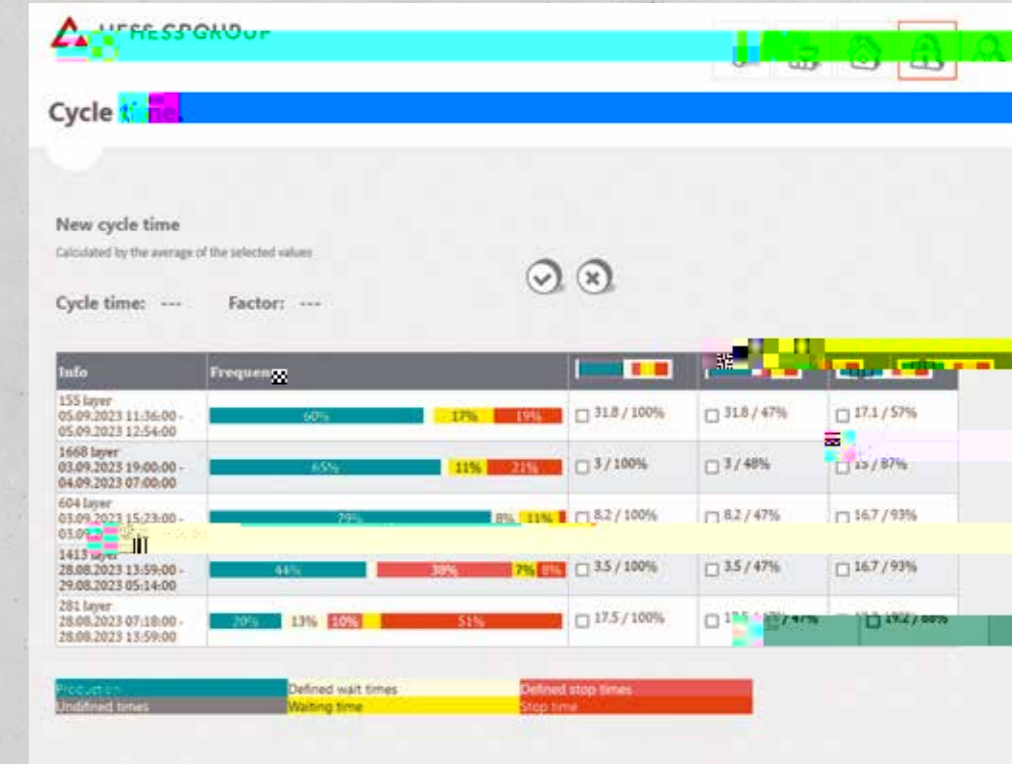
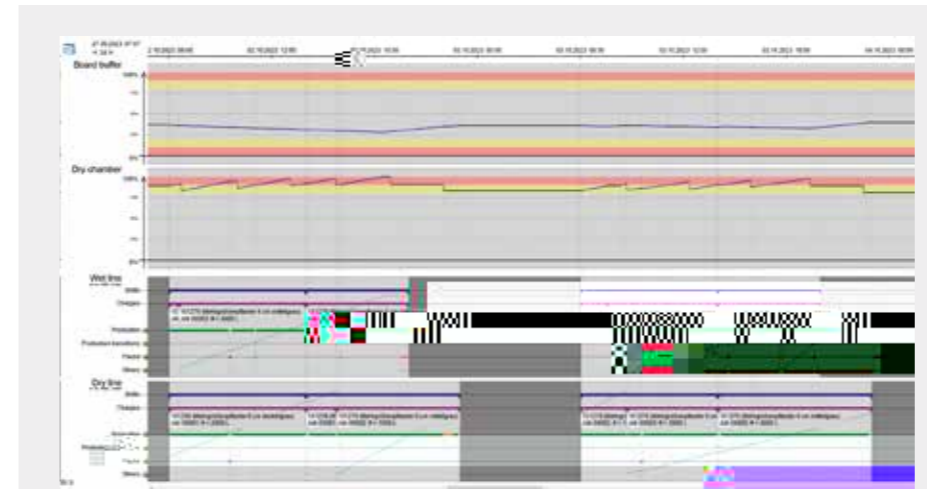
FEATURES OF HESS CONTROL

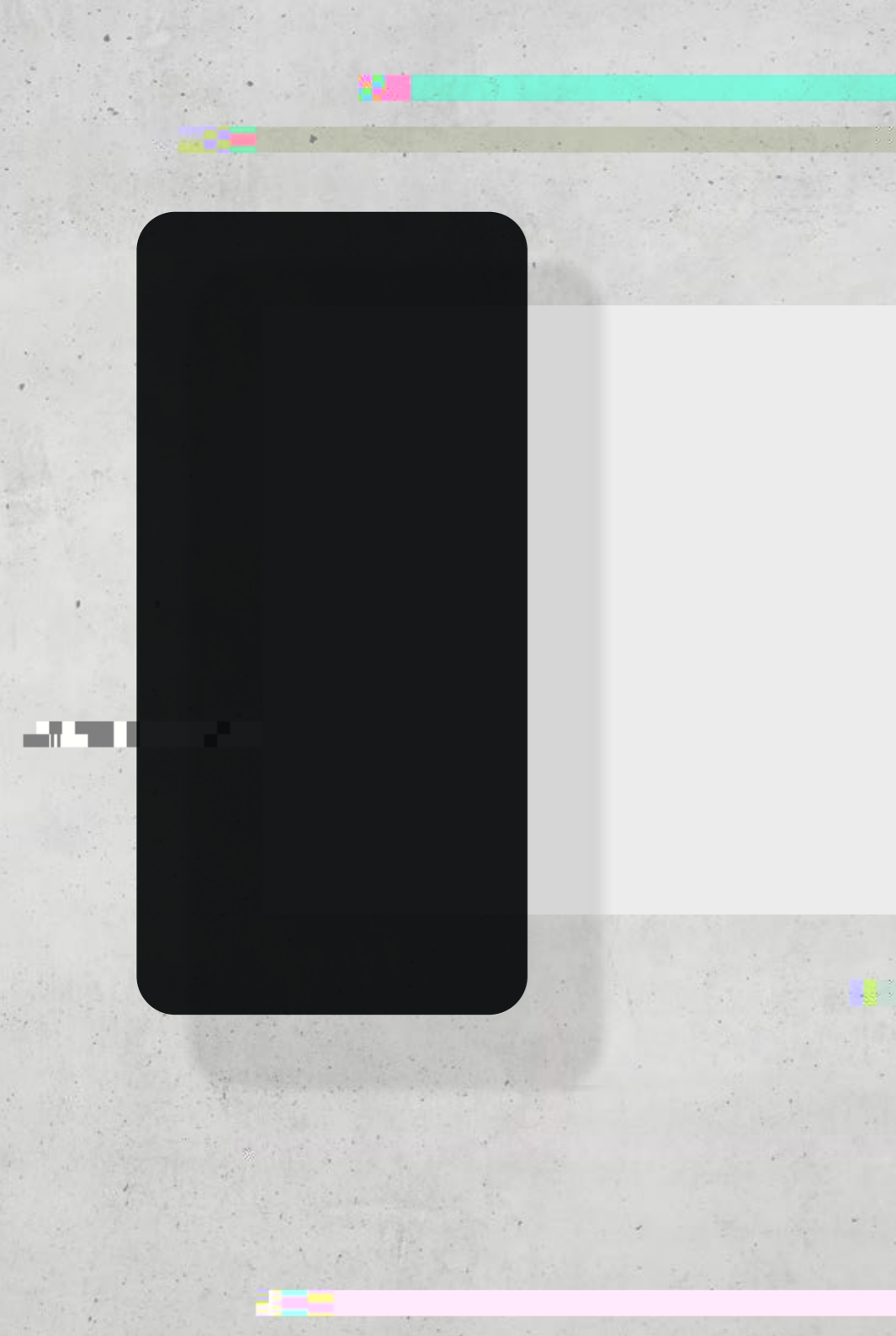
- Master recipe
- Comparable recipe
- Version management recipe management
- Login using an RFID pen at the control panel

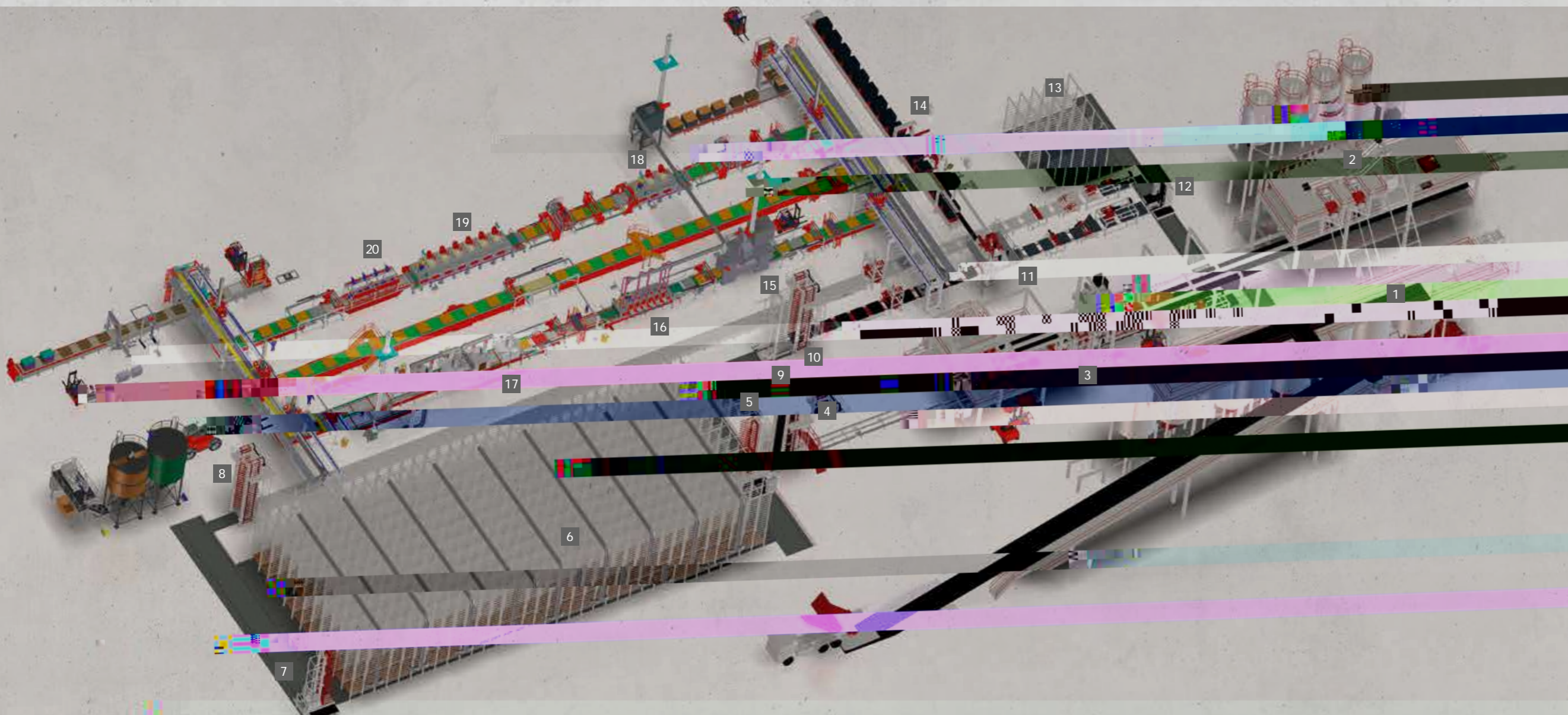
HESS PIMS

PLANT INFORMATION MANAGEMENT SYSTEM

PIMS can be used for optimized plant utilization and efficient personnel planning for maximum productivity. By optimally utilizing drying chambers and buffer systems, bottlenecks and downtimes are avoided. Thanks to just-in-time forecasting of product and order completion, customer logistics management is also optimized. Offline planning of ongoing orders and targeted control of engineer and standby times ensure smooth operations. PIMS can be integrated into plant and web visualization.



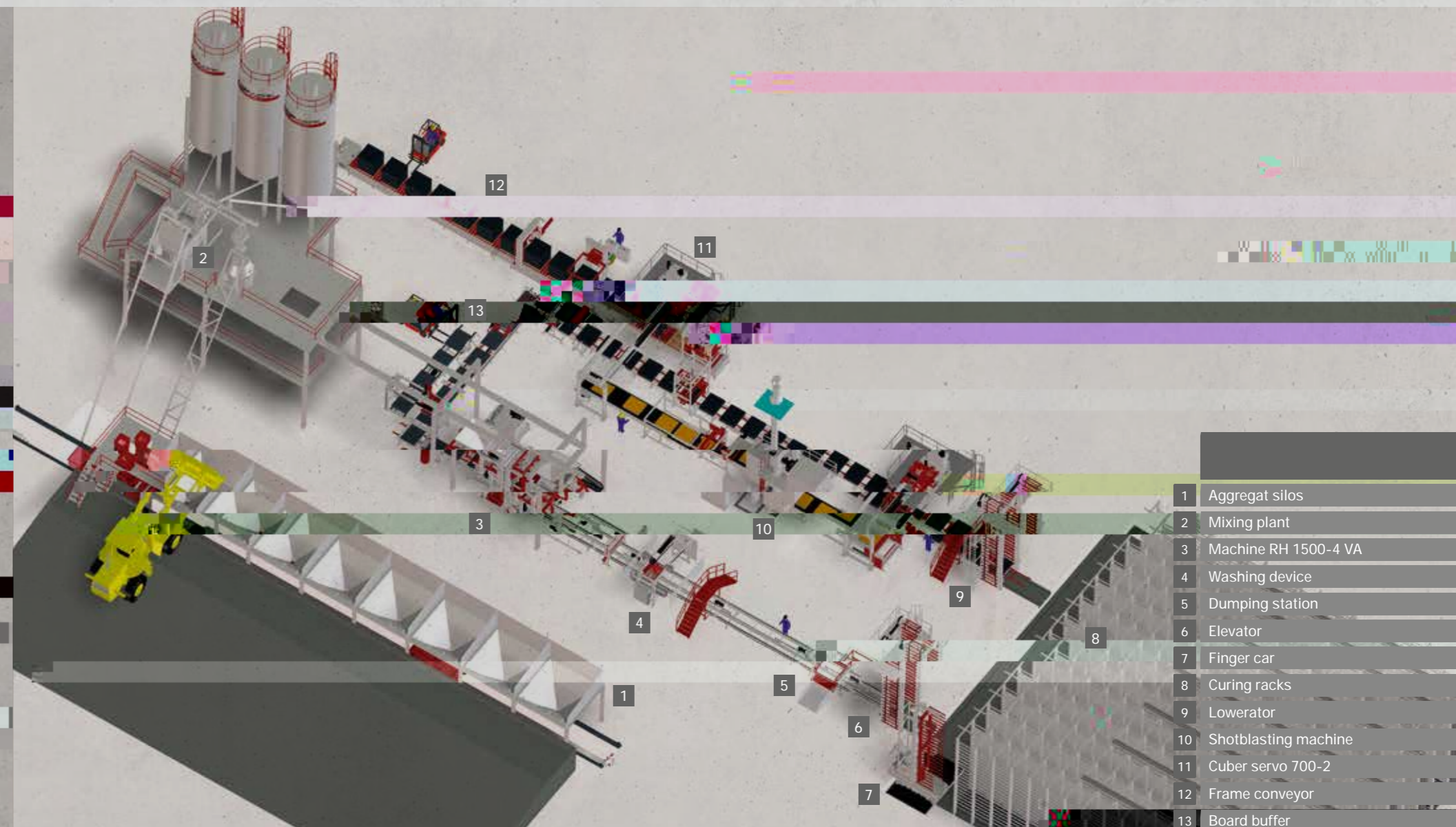
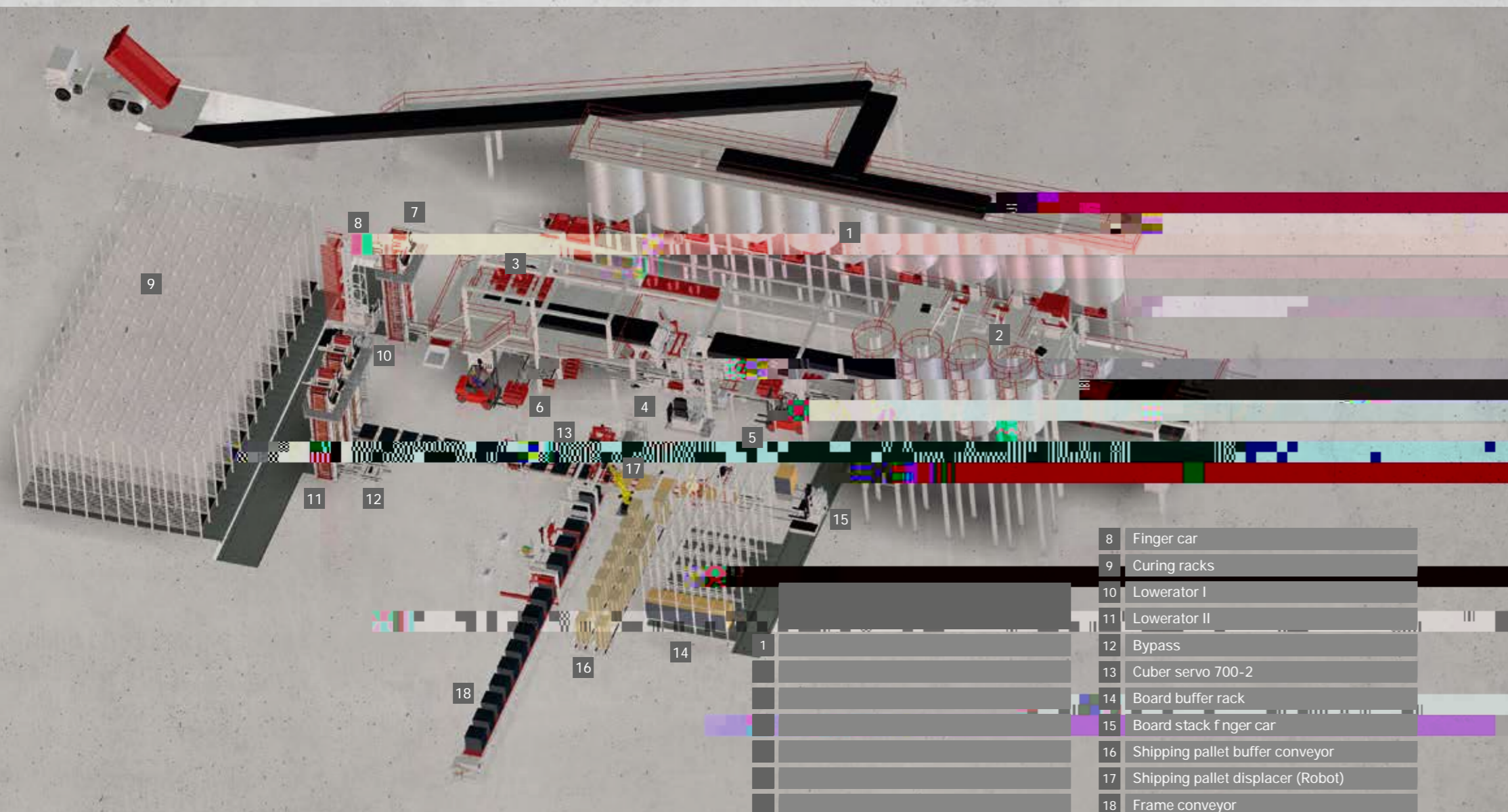


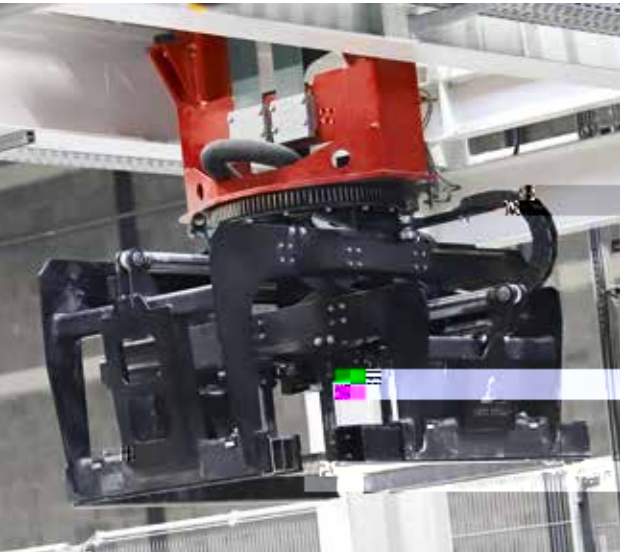


COMPLETE PLANTS

CUSTOMIZED

HESS develops, together with the customers, system concepts that are tailored to the respective requirements.





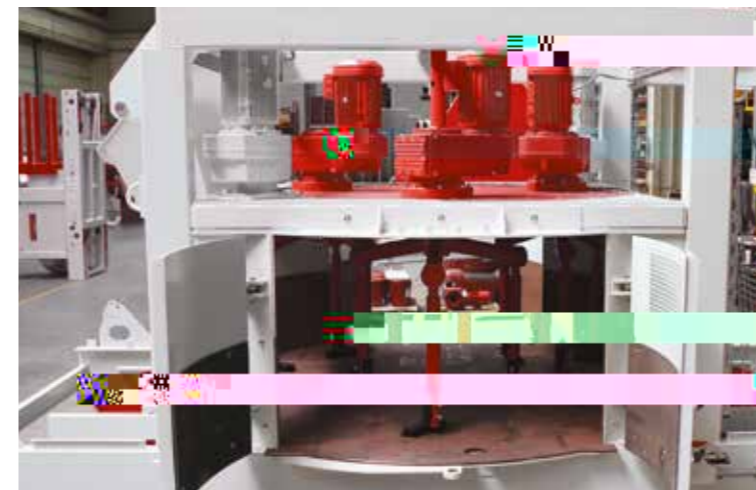
**WE PUT
CONCRETE
INTO SHAPE.**

**BATCHING AND MIXING
PLANTS, CONVEYING
TECHNOLOGY AND
HANDLING**



HESS
BATCHING AND MIXING PLANTS

For the production of high-quality concrete products (interlocking paving stones and slabs, curbstones, hollow blocks and segmental retaining walls, pipes and man-holes as well as various precast elements), we offer the necessary mixing plants including all batching devices for aggregates, cement, and Color-Mix concrete.

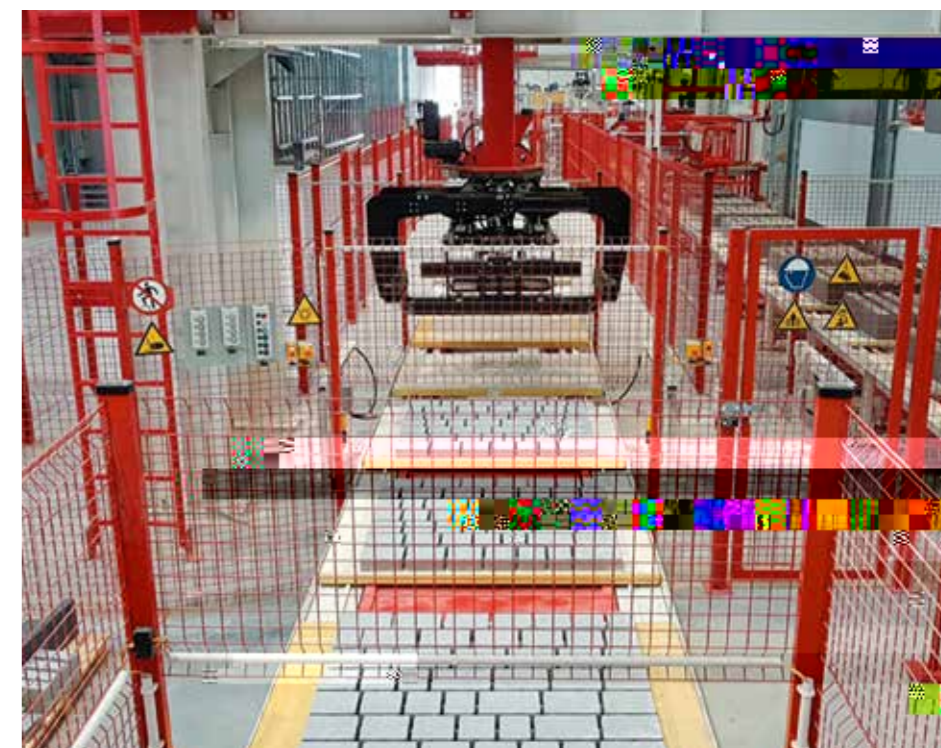
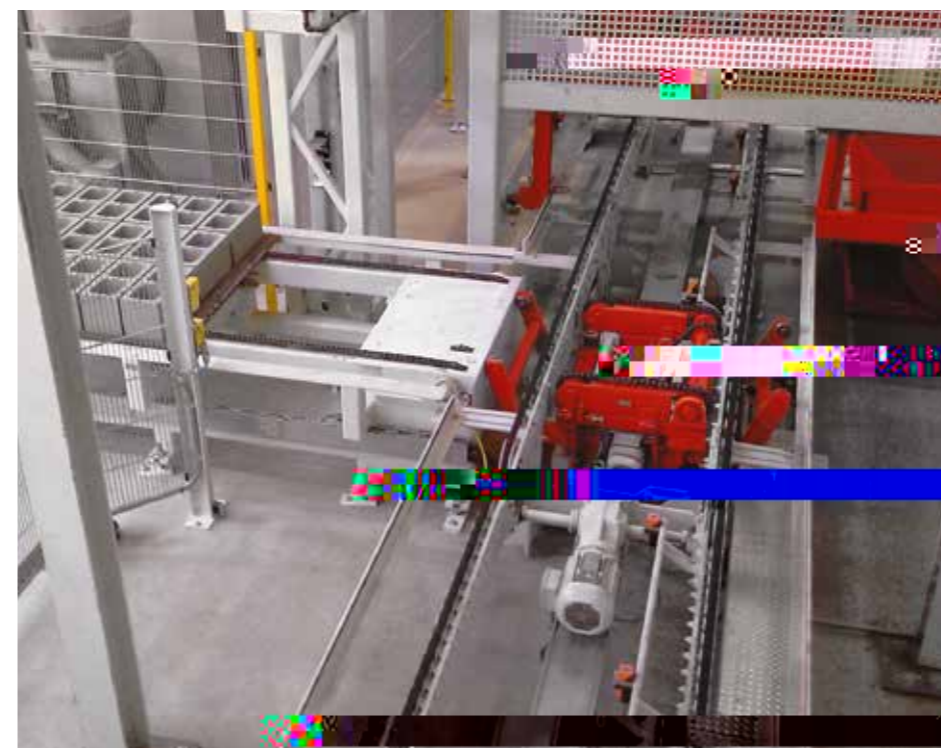
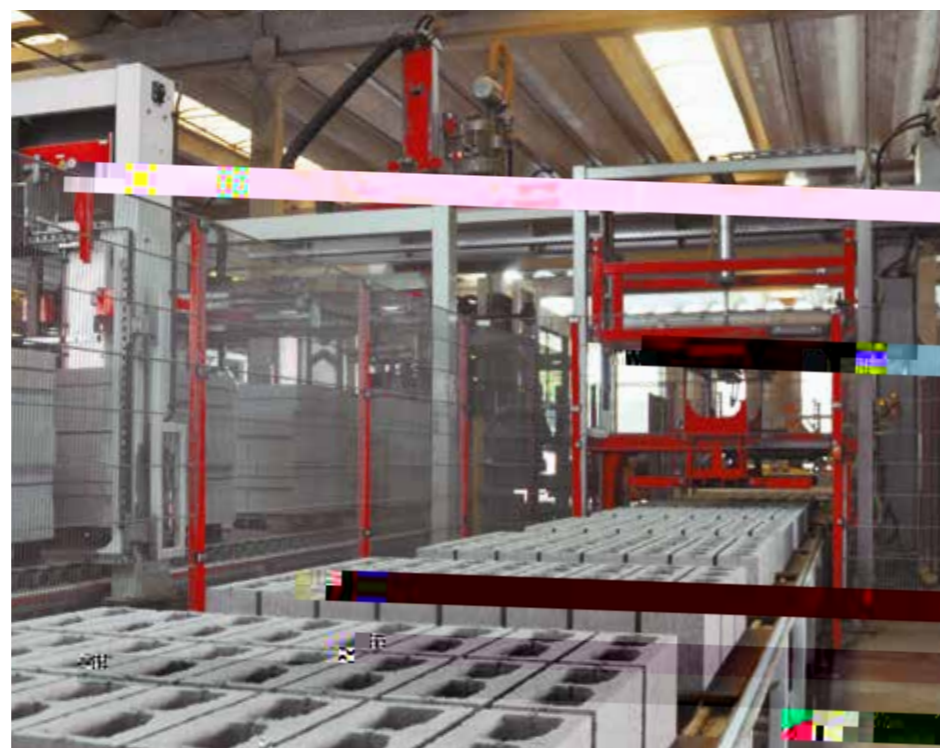


cleanxingeffpor duer t specriag wnte -suply

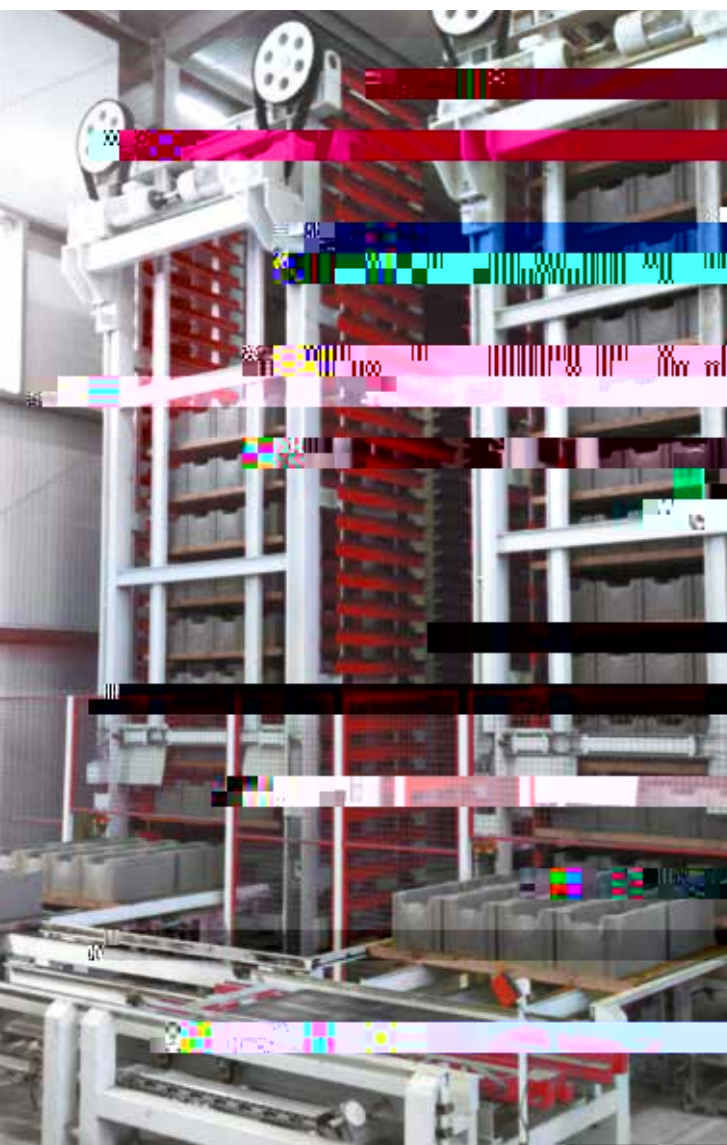
- aly, (for cemen f)-10.3eeuding t the mig
 a aug(rgies r)7.8(v)74(aislalem almos(dust-fpr)993eer)]T172815 0 Td()TJ-17.815 -1.333 Td[(ccen
- methodgiespsartculaplyhsuitlalem(for(pr)3(oduting))T0 -1.333 TD[5(concr)7.6(etn withah log wnt

- Self-supporting construction with lower and upper frame
- Separate drive system (for tool mounting 9.78s and mixingstartse
- toppxing and tsarting thefullyh ladend mirrg
- cleanxing andmtaitenancme
- o lapr
-





Allows the ejection of a production board with freshly produced products for comprehensive quality control on the wet side. Advantage: Production continues uninterrupted during the inspection. Afterwards, the production board is reintroduced into the produc-



We offer the best solution for optimal utilization of drying chamber capacity with a customer-specific storage configuration.



Increases the efficiency of the linked system and can be installed on both the dry and wet sides.



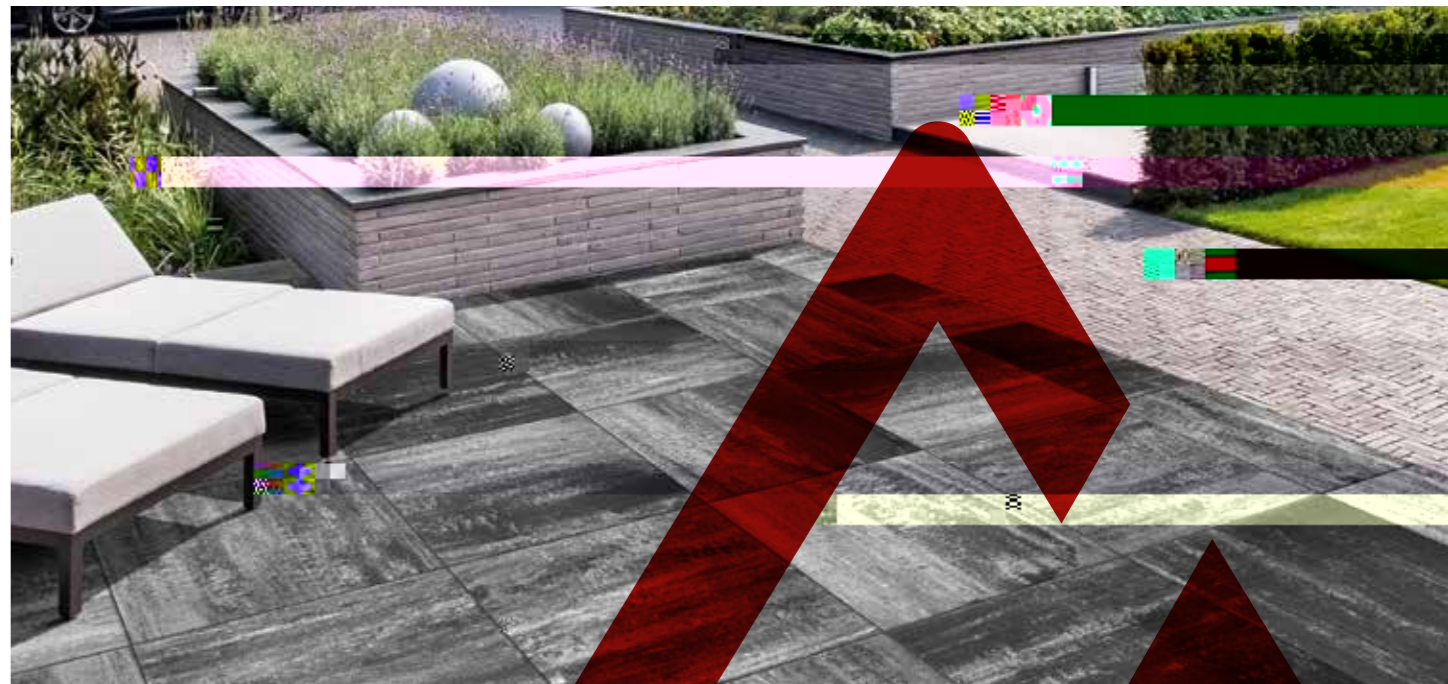
To buffer a larger number of production bases, the transfer unit takes the packages from the dry side, places them in the buffer area, or returns them to the wet side.

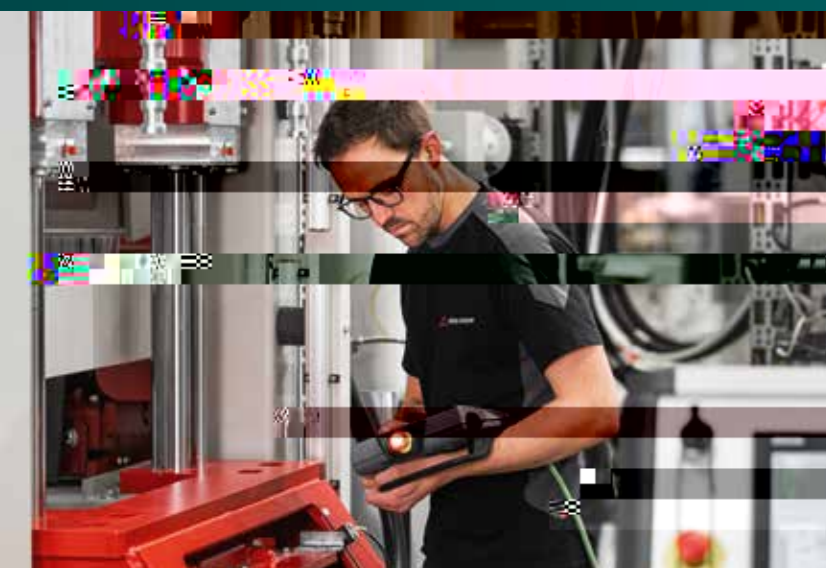


Used for buffering board or sheet packages. The vehicle group picks up the board or sheet packages from the dry side, buffers them in a storage rack, or returns them to the wet side.



**WE PUT
CONCRETE
INTO
SHAPE.**







Freier-Grund-Strasse 123
57299 Burbach-Wahlbach, Germany

Phone: +49 2736 4976 0
E-mail: info@hessgroup.com
www.hessgroup.com